



Monthly Executive Summary Report
Reflects Previous Month's Activity
E.B. Ellington Elementary School
Constituent District 23



Project Team

Associate Superintendent: Dr. Doug Gepford

Principal: Karen Hollinshead-Brown

Project Manager: Dale Collier, Brownstone Construction Group

Site Manager: TBD

Architectural Firm: Harvey Ezekiel, PA/Goforth Brown Associates

Design Architect: Harvey L. Ezekiel - Harvey Ezekiel, PA/Goforth Brown Associates

General Contractor: TBD

Project Scope: Construction of a new 450-student, K-5 elementary school on a new site purchased by CCSD near the intersection of Old Jacksonboro Road and Hwy 17 South in the town of Ravenel, SC to serve the current E.B. Ellington Elementary School population.

Original Budget: \$12 Million

Date: May 10, 2006

Revised Budget: \$15.3 Million

Date: April 9, 2007

Schedule

Design: February 2008 Solicitation: March 2008 Construction: December 2009

Schedule Issues: 100% Construction Documents Completed. Final Plan Reviews Completed

Early Site Package Advertised: Bid Opening - March 11, 2008

GC Pre-Qualification for Building Package Completed – 10 Qualification Packets Received

Major Issues: Wetlands assessment requested by the Army Corps of Engineers is now underway and has delayed start of land disturbance activities. Restudy of early site package design being completed to avoid conflict with small area of site determined to be wetlands by the A.C.E.

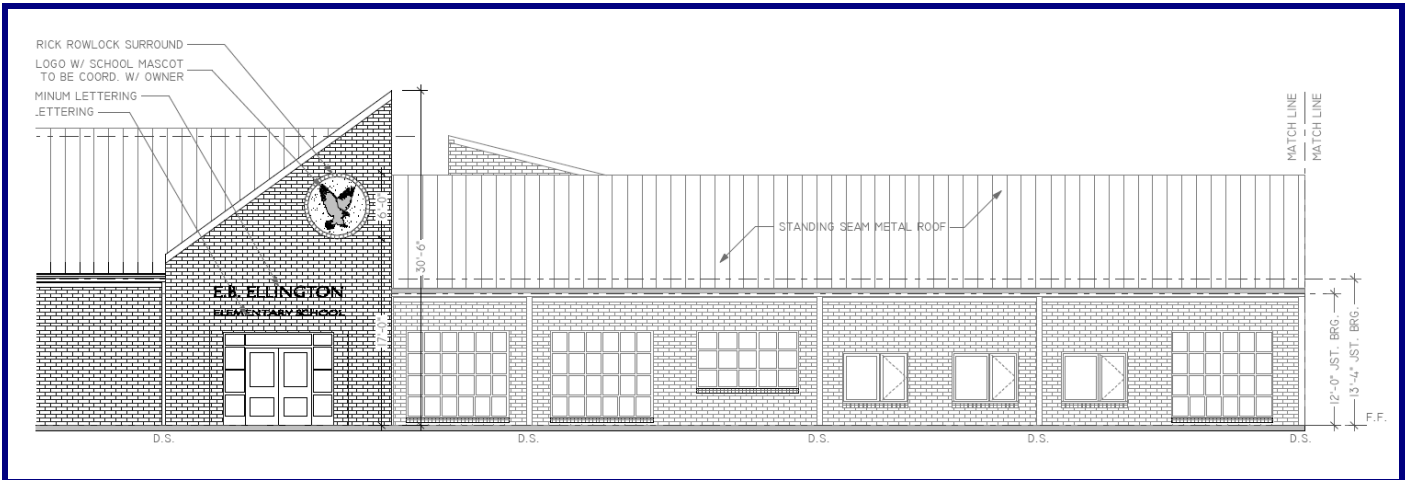
Achievements: Bids received within budget for early site preparation contract. Low bidder has agreed to hold bid day pricing until a resolution with reached with A.C.E. GC Pre-Qualification review process has been completed with approximately ten (10) general contractors submitting qualification packages for consideration. Bidding of building package is to be held until A.C.E. wetlands issues are resolved and after site work is underway.



Monthly Executive Summary Report
Reflects Previous Month's Activity
E.B. Ellington Elementary School
Constituent District 23



Perspective View



Front Entry Elevation