



Monthly Executive Summary Report
Reflects Previous Month's Activity
E.B. Ellington Elementary School
Constituent District 23



Project Team

Associate Superintendent: Dr. Doug Gepford
Principal: Karen Hollinshead-Brown
Project Manager: Dale Collier, Brownstone Construction Group
Site Manager: Nick Bonvillain – Brownstone Construction Group
Architectural Firm: Harvey Ezekiel, PA/Goforth Brown Associates
Design Architect: Harvey L. Ezekiel - Harvey Ezekiel, PA/Goforth Brown Associates
General Contractor: TBD

Project Scope: Construction of a new 450-student, K-5 elementary school on a new site purchased by CCSD near the intersection of Old Jacksonboro Road and Hwy 17 South in the town of Ravenel, SC to serve the current E.B. Ellington Elementary School population.

Original Budget: \$12 Million
Revised Budget: \$15.3 Million

Date: May 10, 2006
Date: April 9, 2007



Schedule

Design: February 2008 Solicitation: March 2008 Construction: December 2009
Schedule Issues: 100% Construction Documents Completed. Final Plan Reviews Completed
Early Site Package Awarded: Malphrus Construction Company - \$1,277,030.00
GC Pre-Qualification for Building Package Completed – 10 Qualification Packets Received



Major Issues: Wetlands assessment requested by the Army Corps of Engineers has been resolved to clear the way for land disturbance activities. Sitework contractor Malphrus Construction has agreed to mobilized and start land clearing work on July 7, 2008.

Achievements: Malphrus Construction, low bidder for sitework, agreed to hold bid day pricing until the resolution was reached with A.C.E. A contract was been issued to Malphrus to allow them to proceed with ordering materials in an attempt to avoid anticipated price increases. A Pre-Construction Conference was also held with Malphrus on May 27, 2008.

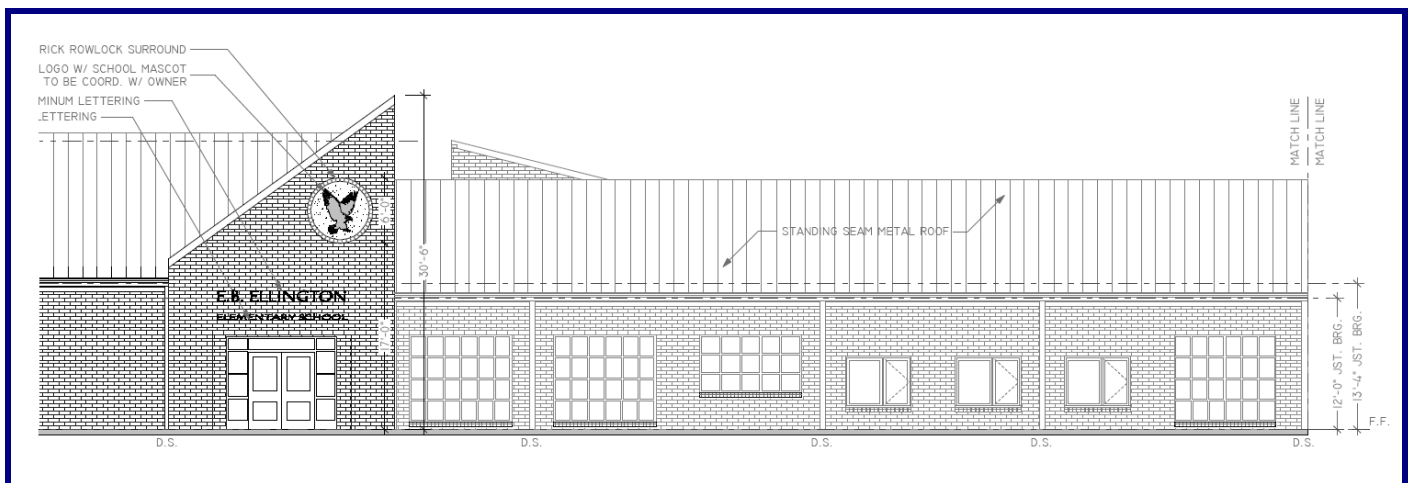


Monthly Executive Summary Report
Reflects Previous Month's Activity
E.B. Ellington Elementary School
Constituent District 23

GC Pre-Qualification review process has been completed with approximately ten (10) general contractors submitting qualification packages for consideration. Bidding of building package to be coordinated to allow this contract to start after the building pad is prepared by Malphrus.



Perspective View



Front Entry Elevation