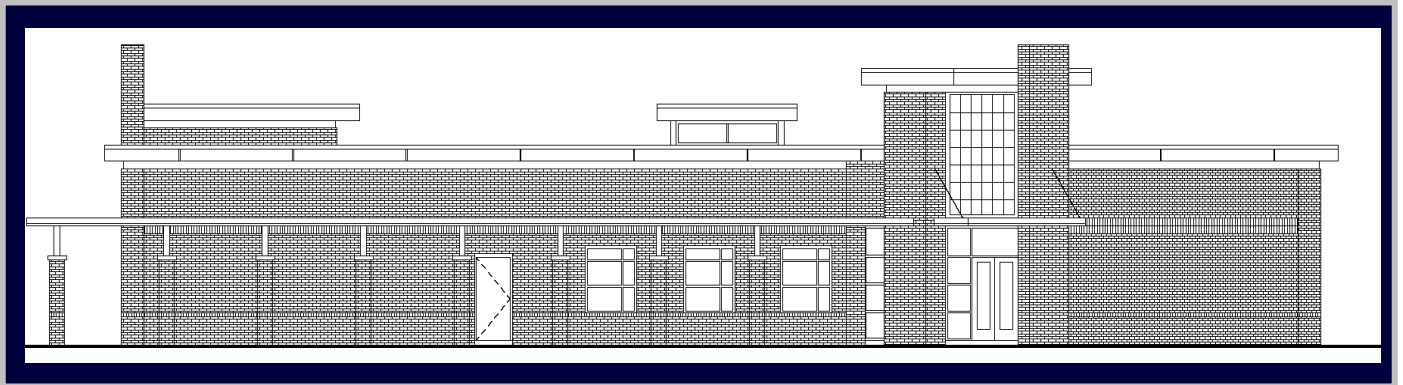




Monthly Executive Summary Report
Reflects Previous Month's Activity
Baptist Hill High School
Constituent District 23



Project Team

Associate Superintendent: Louis Martin
Principal: Mr. Adrian Busch
Project Manager: Dale Collier – Brownstone Construction Group
Site Manager: Nick Bonvillain – Brownstone Construction Group
Architectural Firm: McKellar & Associates Architects
Design Architects: Anne Maguire and Andy Clark - McKellar & Associates Architects
Early Site Work Contractor: Palmetto Construction Group
General Contractor: To Be Determined

Project Scope: Construction of a new classroom building on the Baptist Hill High School campus to house current 7th and 8th Grade students. Work also includes master planning of the site to formalize planning for future upgrades at the campus.

Budget:

Original Budget: \$7 Million

Date: March 13, 2010



Schedule

Design: February 2010

Solicitation: August 2010

Construction: August 2011

Early Site Package Contract: \$470,000.00

Construction Package Contract: To Be Determined

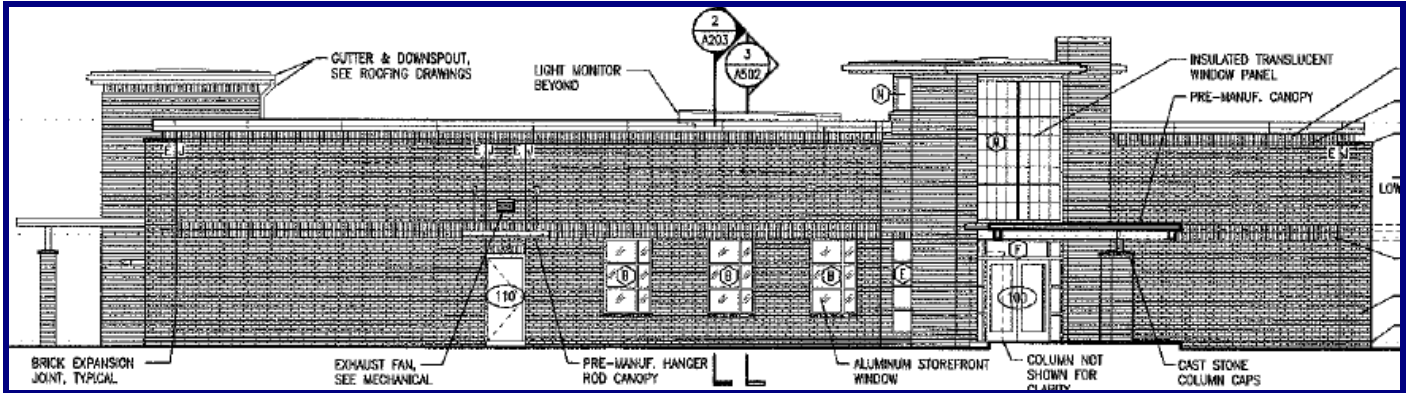


Early Site Project: Bids were taken on June 24, 2010 for an early site work package with Palmetto Construction Group determined to be the successful bidder. With the contractor's bid confirmed to be all inclusive, a pre-construction meeting has been conducted to give the contractor direction regarding the start of work on the existing school campus. Palmetto will start work at the school on July 6, 2010 in accordance with the Notice to Proceed to be issued by the school district. Work involved in this phase of the project will be to install underground utilities and the building pad for the new addition for 7th and 8th graders on campus. Underground earthquake drains will be installed in this phase to minimize disruptions during the start of the school year.

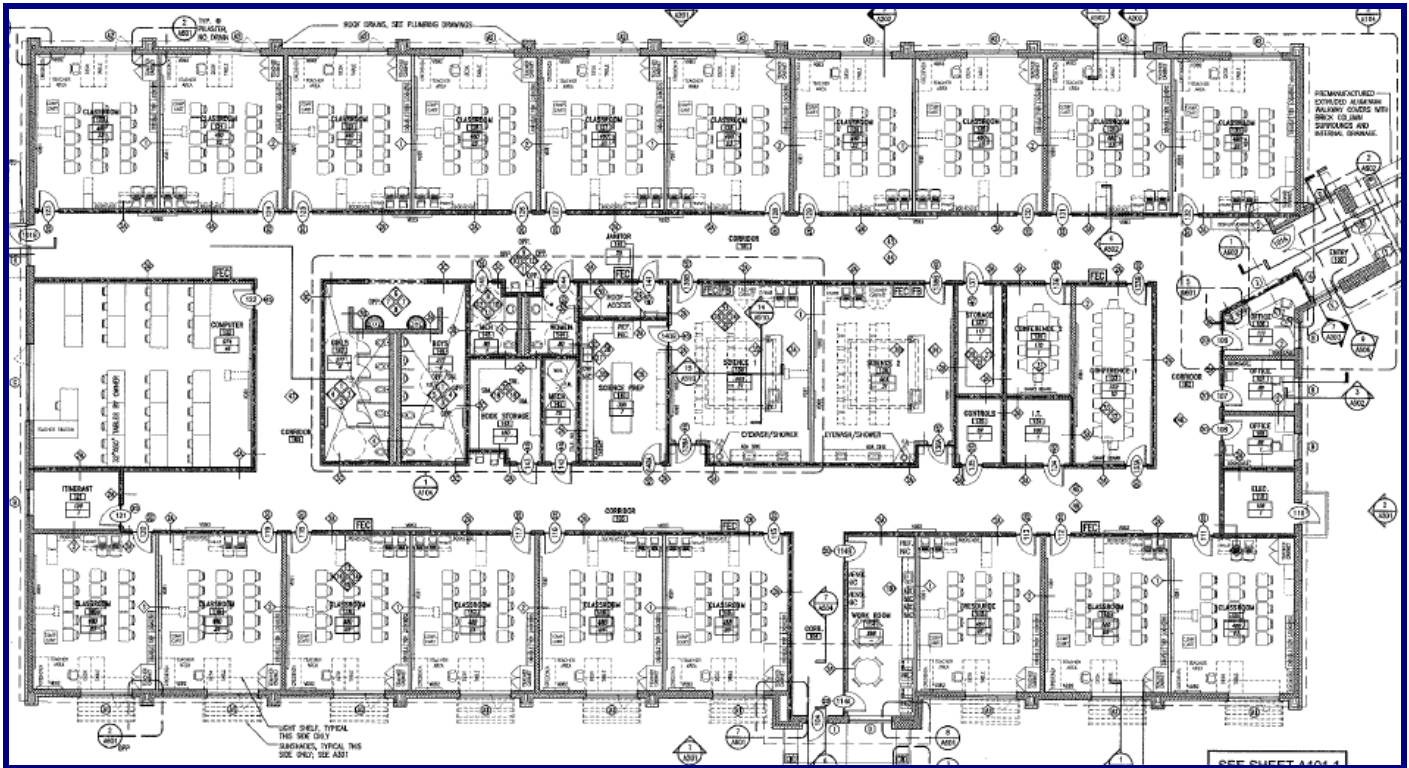
Design Update: McKellar and Associates has completed 100% Design Construction Documents for the vertical building package. Drawings have been sent to the Office of School Facilities for official review prior to bidding. Construction Management will conduct concurrent Owner reviews and cost estimating of plans during this 30-day review period.



Monthly Executive Summary Report
Reflects Previous Month's Activity
Baptist Hill High School
Constituent District 23



100% Construction Documents – New Addition Main Entrance Elevation (For Review)



100% Construction Documents – New Addition Floor Plan (For Review)