



Monthly Executive Summary Report
Reflects Previous Month's Activity

Harbor View Elementary School
Constituent District 3



Project Team

Associate Superintendent:	Terri Nichols	
Principal:	Lara Latto	
Project Manager:	Jay Poston	Site Manager: Gerald Duckworth
Architectural Firm:	Rosenblum Coe Architects, Inc.	Design Architect: Steve Coe
General Contractor:	TBD	

Project Scope:

Construction of a new two-story 600-student K-5 facility on the existing site. The facility will include 28 instructional spaces with complementary support areas as indicated in the Educational Specifications. The existing facility will be demolished prior to the start of construction. Students will use the old Stiles Point Elementary school campus for swing space during the approximate two year construction.

Budget:

Original Budget:	\$26.5 million	Date: June 2012
Revised Budget:	N/A	Date: N/A

Schedule:

Design: Comp. June 2012 **Solicitation:** Comp. Aug. 2012 **Construction:** Aug. 2012-Aug. 2014

Schedule Issues: Swing space site construction and road improvement package delayed due to permitting modification requirements from SCDOT. Construction start anticipated this month.

Major Issues: Swing space site construction and Mikell Drive improvements

Achievements: Award of swing space site/Mikell Drive improvements construction package
Completion of Design Development (35%) Documents package



Monthly Executive Summary Report
Reflects Previous Month's Activity
Harbor View Elementary School
Constituent District 3

Phasing/Mobile Classrooms:

Construction on the existing site will be accomplished in one phase. The old Stiles Point Elementary campus will be used as swing space for the duration of the construction process. Mobile classrooms are not anticipated.



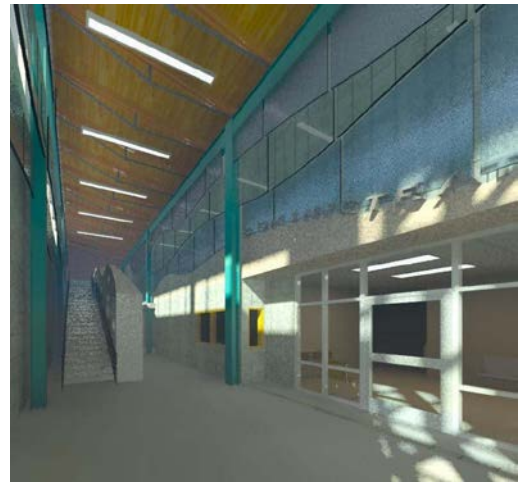
Monthly Executive Summary Report
Reflects Previous Month's Activity

Harbor View Elementary School

Constituent District 3



Alternate Elevation



Lobby Interior Conceptualization



Enlarged Site Plan