



Monthly Executive Summary Report
Reflects Previous Month's Activity

Ashley River Creative Arts Elementary School
Constituent District 10



Project Team

Associate Superintendent: Dr. Doug Gepford

Principal: Jayne Ellicott

Project Manager: Jay Poston

Architectural Firm: Liollo Architecture

General Contractor: Martin Engineering, Inc.

Site Manager: Carl Dietz

Design Architect: Cherie Liollo

Project Scope:

Construction of a new two-story 600-student K-5 facility on the existing site while keeping the existing facility operational during the building process. The facility will include 29 instructional spaces with complementary support areas as indicated in the Educational Specifications. The existing facility will be demolished as required in accordance with the construction phases and completed at the end of the project.

Budget:

Original Budget: \$17.7 million

Date: 5-10-2006

Revised Budget: \$19.9 million

Date: 4-9-2007

Schedule:

Design: February 2008

Solicitation: April 2008

Construction: June 2010

Schedule Issues: Windows / Dry-in
Roof installation

Major Issues: Permanent power connect / switch-over
Boiler room demo / renovation

Achievements: Block Masonry
Second floor slab placement
Steel erection
Exterior Metal studs north wall
Top-out beam setting ceremony



Monthly Executive Summary Report
Reflects Previous Month's Activity

Ashley River Creative Arts Elementary School
Constituent District 10

Phasing/Mobile Classrooms:

Construction will be accomplished in phases utilizing additional mobile units on site to accommodate classroom spaces during the building process.



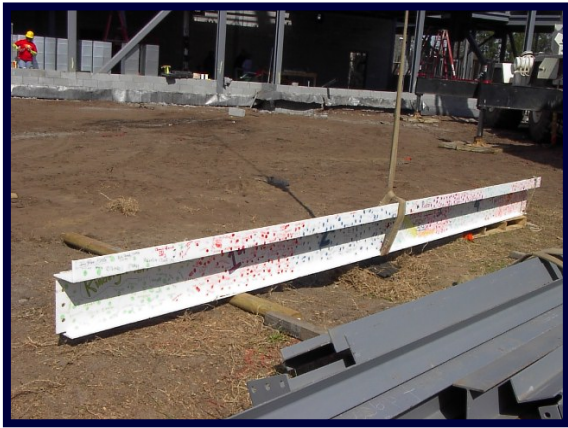
Monthly Executive Summary Report
Reflects Previous Month's Activity
Ashley River Creative Arts Elementary School
Constituent District 10



Picture



Picture



Picture



Picture



Picture