



Monthly Executive Summary Report
Reflects Previous Month's Activity
Mount Pleasant Academy
Constituent District 2



Project Team

Associate Superintendent: Terri Nichols

Principal: Jane McGee Davis

Project Manager: Ed Strack

Site Manager: Larry Jordon

Architectural Firm: Stubbs Muldrow Herin

Design Architect: Judy Dixon, AIA, LEED AP

General Contractor: Brantley Construction Company, LLC

Project Scope:

Existing facility is demolished and a new 64,000 sf two story facility will be constructed. The new facility will have a capacity of 500 K-5 students. The new facility will include 26 teaching stations plus science and special Ed spaces. Facility will also include a 3,000 sf multipurpose room.

Budget:

Original Budget: \$16.2 million

Date: May 10, 2006

Revised Budget: \$18.2 million

Date: April 9, 2007

Current Status:

The entire building shell is now erected with the following activities in progress:

- a) Roofing –40% complete
- b) Exterior masonry –45%complete
- c) Interior metal stud framing first and second floor --80% complete
- d) Interior electrical, mechanical and plumbing rough-in –85%complete

Schedule:

Design: January 2008

Solicitation: February 2008

Construction completion:

Schedule Issues: Substantial completion scheduled for June 1, 2009 with final compilation scheduled for July 1, 2009.

Major Issues: None.

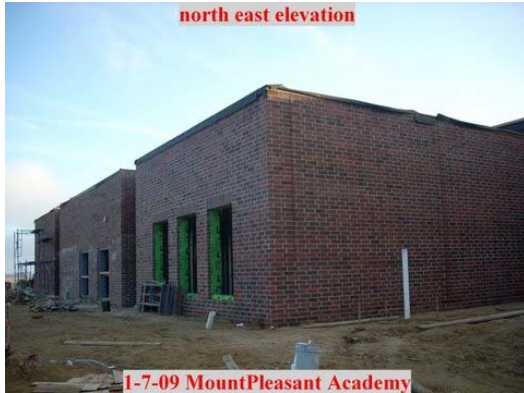
Achievements:

Entire building shell complete with roofing and exterior masonry in progress

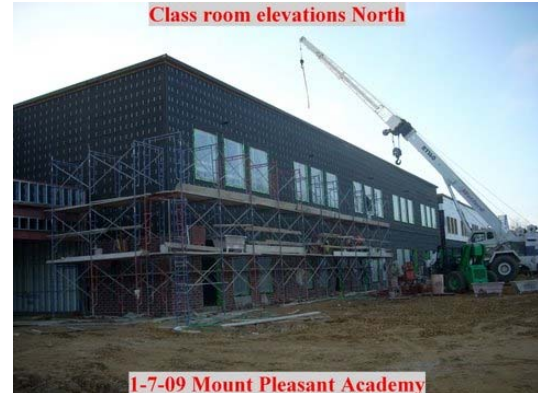


Monthly Executive Summary Report
Reflects Previous Month's Activity
Mount Pleasant Academy
Constituent District 2

First shareholders meeting held on Dec 17, 2008. Next shareholders meeting scheduled for Jan 21, 2009.



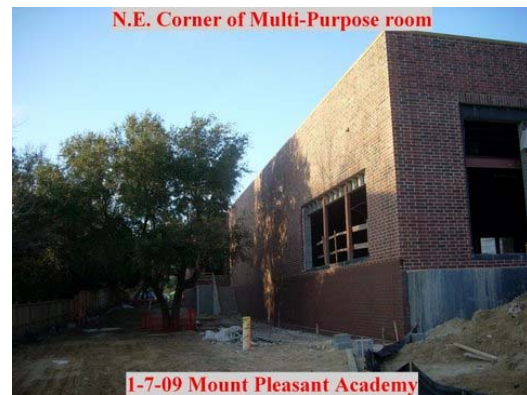
North East Elevation



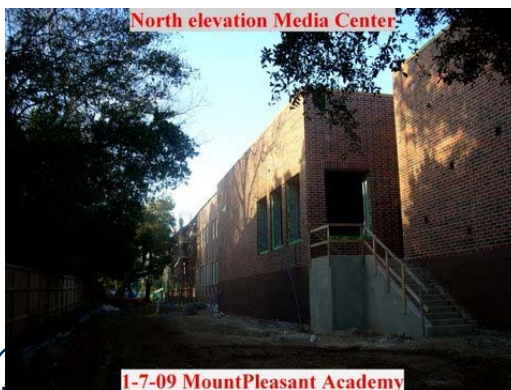
Classroom Elevations North



Multi-Purpose Patio Area



N.E. Corner of Multi-Purpose room



North Elevation Media Center