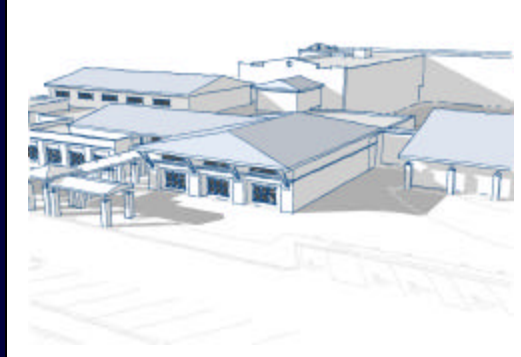




Monthly Executive Summary Report
Reflects Previous Month's Activity
Orange Grove Elementary Charter School
Constituent District 10



Project Team

Associate Superintendent: Dr. Vashti Washington

Principal: Larry Dizenzo

Project Manager: Jay Poston

Site Manager: TBD

Architectural Firm: Altman Architectural Group

Design Architect: Ben Thompson

General Contractor: TBD

Project Scope:

Construction of a new two-story 725-student K-5 facility on the existing site. The facility will include 35 instructional spaces with complementary support areas as indicated in the Educational Specifications. The existing facility will be demolished prior to the start of construction. Students will use the existing McNair Elementary school campus for swing space during the approximate two year construction.

Budget:

Original Budget: \$25 million

Date: 5-10-2006

Revised Budget: \$22.3 million

Date: 4-9-2007



Schedule:

Design: January 2008

Solicitation: February 2008

Construction: August 2009

Schedule Issues: Contract Award March 2008.



Major Issues: Construction firm prequalification
Award construction contract
Installation of earthquake drains

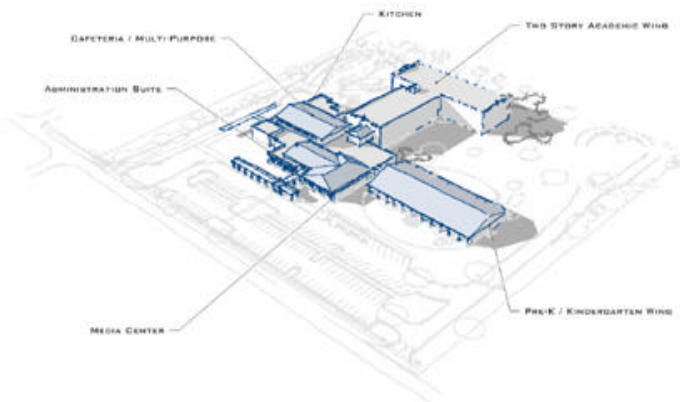
Achievements: Solicitation of general contractor qualification packages
Completion of Construction Documents package
Building demolition complete
Asbestos abatement complete



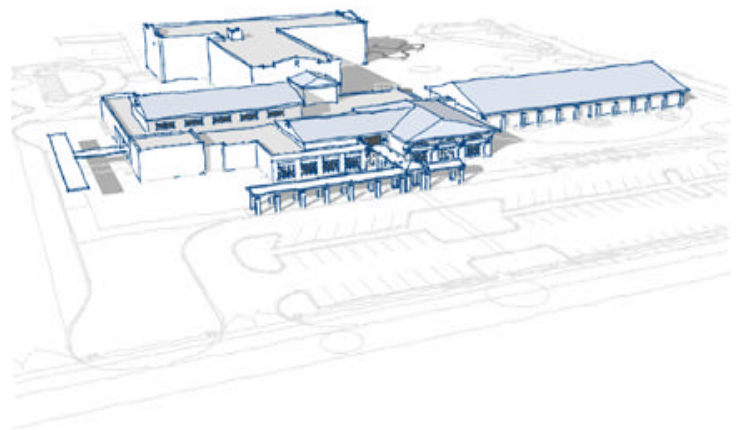
Monthly Executive Summary Report
Reflects Previous Month's Activity
Orange Grove Elementary Charter School
Constituent District 10

Phasing/Mobile Classrooms:

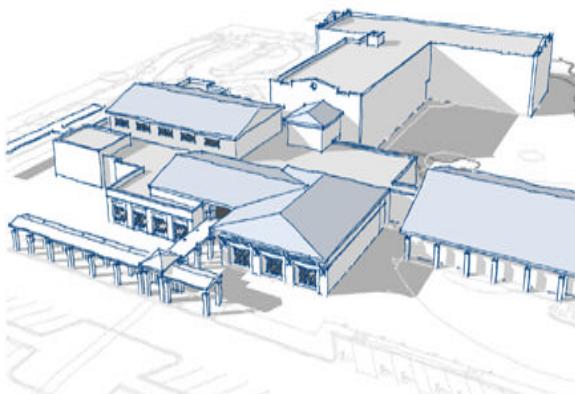
Construction on the existing site will be accomplished in one phase. The existing McNair Elementary campus will be used as swing space with additional mobile units located on site to accommodate the entire student population for the duration of the construction process.



Full Elevation



Front Elevation



Close-up Front Elevation



Monthly Executive Summary Report
Reflects Previous Month's Activity
Orange Grove Elementary Charter School
Constituent District 10



Demolished Site



Demolished Site



New Site



New Site