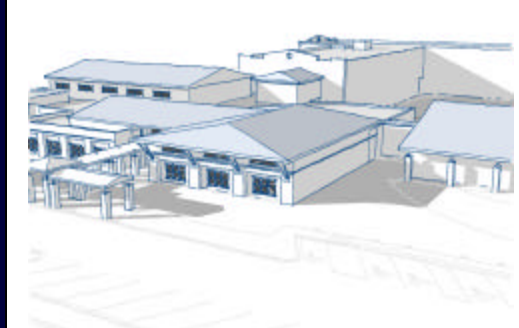




Monthly Executive Summary Report
Reflects Previous Month's Activity
Orange Grove Elementary Charter School
Constituent District 10



Project Team

Associate Superintendent: Dr. Vashti Washington

Principal: Larry Dizenzo

Project Manager: Jay Poston

Site Manager: TBD

Architectural Firm: Altman Architectural Group

Design Architect: Ben Thompson

General Contractor: TBD

Project Scope:

Construction of a new two-story 725-student K-5 facility on the existing site. The facility will include 35 instructional spaces with complementary support areas as indicated in the Educational Specifications. The existing facility will be demolished prior to the start of construction. Students will use the existing McNair Elementary school campus for swing space during the approximate two year construction.

Budget:

Original Budget: \$25 million

Date: 5-10-2006

Revised Budget: \$22.3 million

Date: 4-9-2007



Schedule:

Design: November 2007

Solicitation: December 2007

Construction: August 2009

Schedule Issues: Delay in award of the site preparation & demolition package contract.



Major Issues: Site Preparation/Demolition package for existing Orange Grove Elementary Charter School
Construction firm prequalification package advertisement and selection

Achievements: Completion of Construction Documents package
Completion of asbestos abatement portion of demolition
Award of Site preparation & demolition package



Monthly Executive Summary Report
Reflects Previous Month's Activity
Orange Grove Elementary Charter School
Constituent District 10

Phasing/Mobile Classrooms:

Construction on the existing site will be accomplished in one phase. The existing McNair Elementary campus will be used as swing space with additional mobile units located on site to accommodate the entire student population for the duration of the construction process.



Construction Progress



Construction Progress



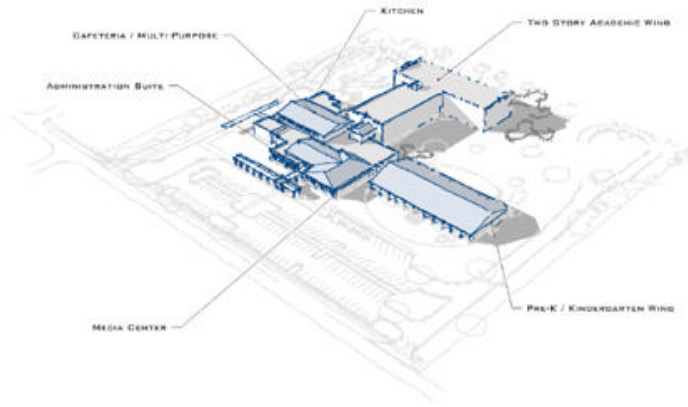
Construction Progress



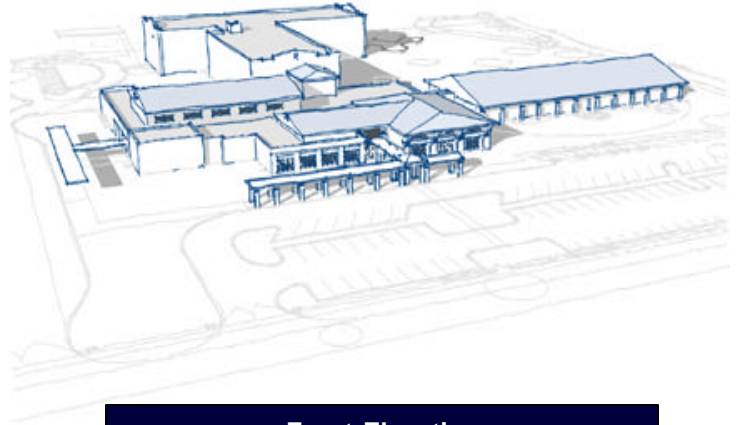
Construction Progress



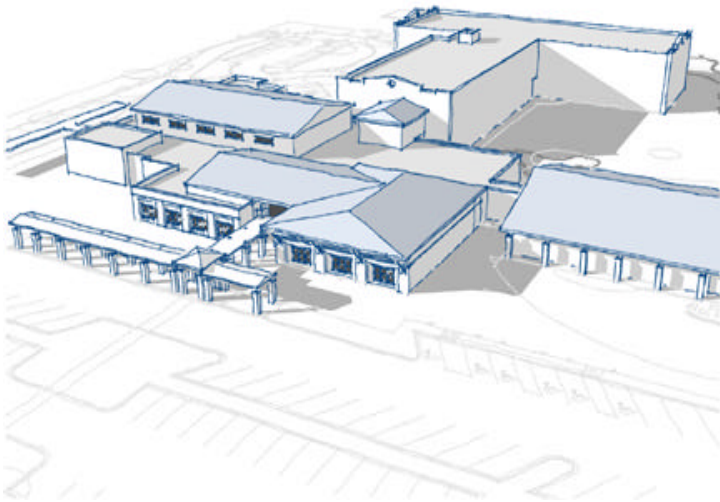
Monthly Executive Summary Report
Reflects Previous Month's Activity
Orange Grove Elementary Charter School
Constituent District 10



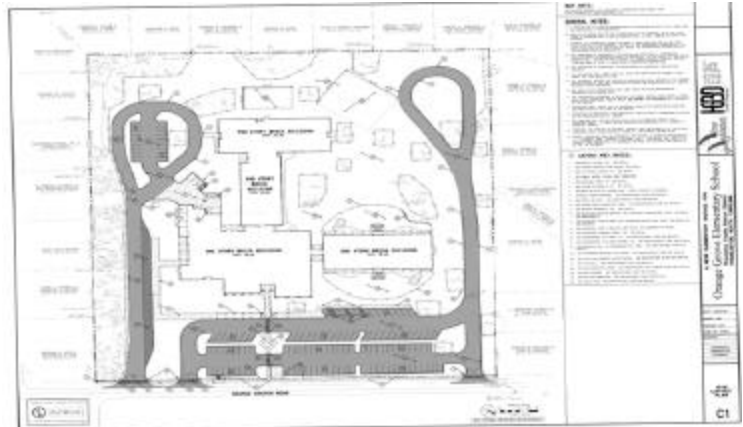
Full Elevation



Front Elevation



Close-up Front Elevation



Site Plan