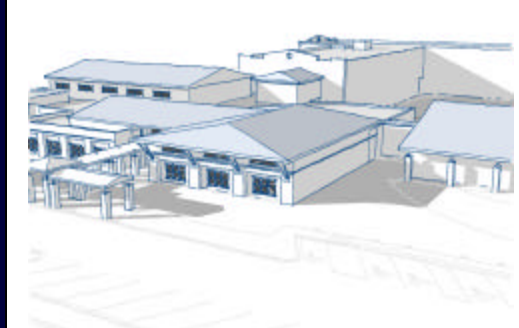




Monthly Executive Summary Report  
Reflects Previous Month's Activity  
**Orange Grove Elementary Charter School**  
Constituent District 10



***Project Team***

**Associate Superintendent:** Dr. Vashti Washington

**Principal:** Larry Dizenzo

**Project Manager:** Jay Poston

**Site Manager:** TBD

**Architectural Firm:** Altman Architectural Group

**Design Architect:** Ben Thompson

**General Contractor:** TBD

***Project Scope:***

Construction of a new two-story 725-student K-5 facility on the existing site. The facility will include 35 instructional spaces with complementary support areas as indicated in the Educational Specifications. The existing facility will be demolished prior to the start of construction. Students will use the existing McNair Elementary school campus for swing space during the approximate two year construction.

***Budget:***

**Original Budget:** \$25 million

**Date:** 5-10-2006

**Revised Budget:** \$22.3 million

**Date:** 4-9-2007



***Schedule:***

**Design:** November 2007

**Solicitation:** December 2007

**Construction:** August 2009

**Schedule Issues:** None at this time.



**Major Issues:** Site Preparation/Demolition package for existing Orange Grove Elementary Charter School

**Achievements:** Submission of 100% Construction Document package  
McNair temporary campus/Portable Classroom installation completion  
Procurement of off-campus overflow parking lot  
Advertisement/award of Site preparation & demolition package



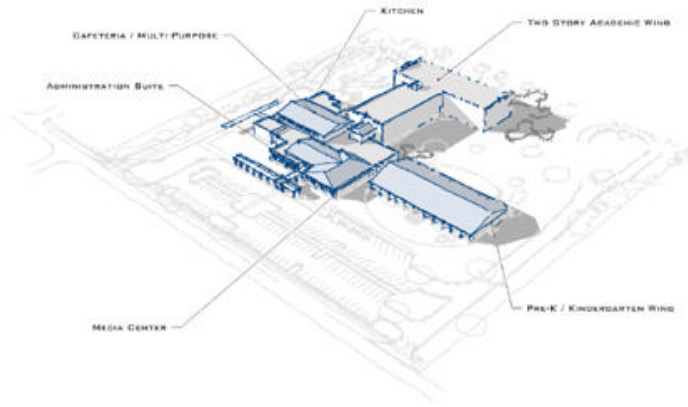
**Monthly Executive Summary Report**  
Reflects Previous Month's Activity  
**Orange Grove Elementary Charter School**  
**Constituent District 10**

***Phasing/Mobile Classrooms:***

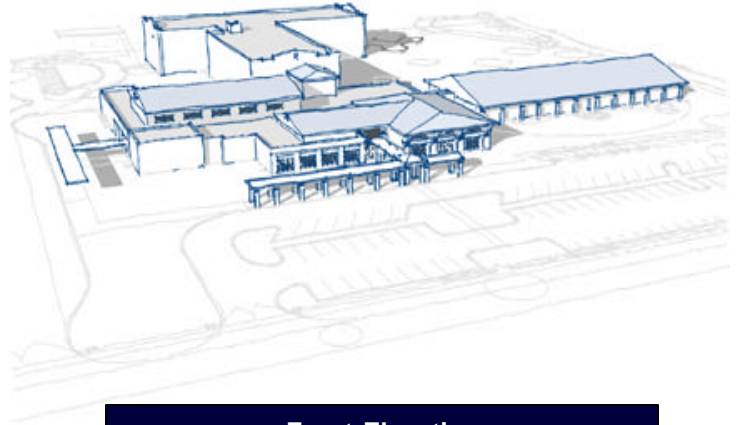
Construction on the existing site will be accomplished in one phase. The existing McNair Elementary campus will be used as swing space with additional mobile units located on site to accommodate the entire student population for the duration of the construction process.



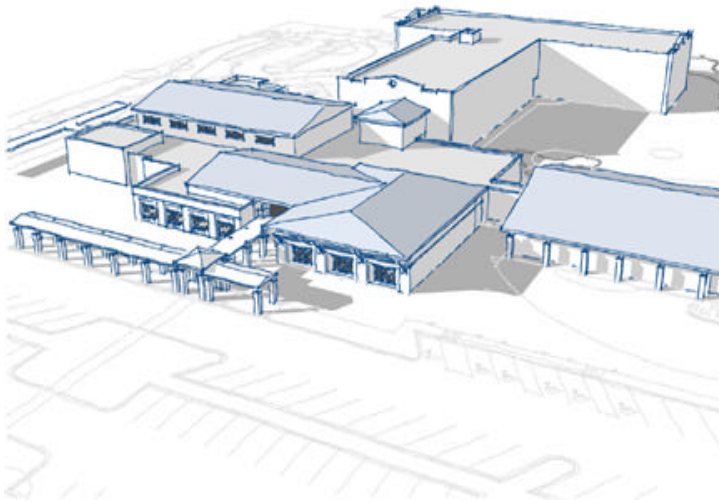
Monthly Executive Summary Report  
Reflects Previous Month's Activity  
**Orange Grove Elementary Charter School**  
Constituent District 10



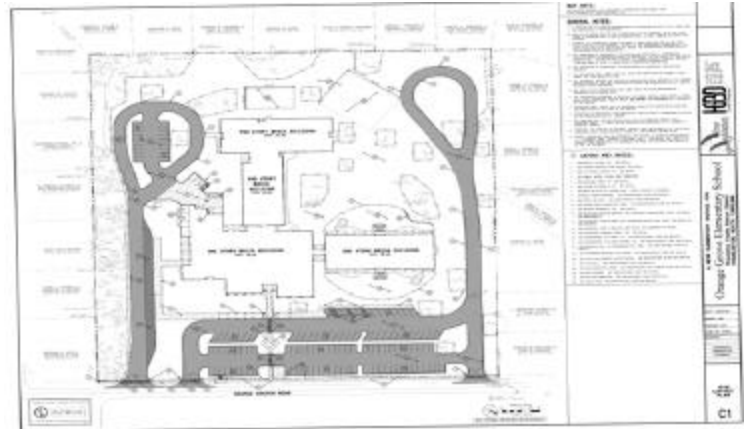
**Full Elevation**



**Front Elevation**



**Close-up Front Elevation**



**Site Plan**