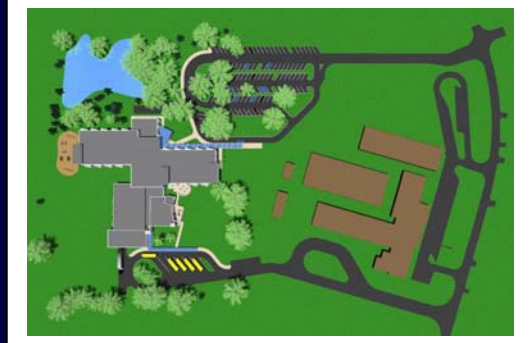




Monthly Executive Summary Report
 Reflects Previous Month's Activity
Stiles Point Elementary School
 Constituent District 3



Project Team

Associate Superintendent: Dr. Doug Gepford

Principal: Stephen Burger

Project Manager: Jay Poston

Architectural Firm: McMillan-Smith & Partners Architects

General Contractor: TBD

Site Manager: TBD

Design Architect: Emma Souder

Project Scope:

Construction of a new two-story 600-student K-5 facility on the existing site. The facility will include 29 instructional spaces with complementary support areas as indicated in the Educational Specifications. The new facility will be erected behind the existing school which will continue to be utilized during the approximate two year duration. Upon completion of the project the existing facility will remain for use as future swing space.

Budget:

Original Budget: \$22 million

Revised Budget: \$19 million

Date: 5-10-2006

Date: 4-9-2007



Schedule:

Design: April 2008

Solicitation: February 2008

Construction: October 2009

Schedule Issues: Contract award June 2008



Major Issues: Prequalification of solicited general contractors
 Finalization of construction documents
 Final City of Charleston Technical Review
 Resolution of interim & final pedestrian traffic issues

Achievements: Solicitation of general contractor qualification packages
 Submission of Construction Documents package to OSF



Monthly Executive Summary Report
Reflects Previous Month's Activity
Stiles Point Elementary School
Constituent District 3

Phasing/Mobile Classrooms:

Construction on the existing site will be accomplished in one phase. Existing mobile classroom units will continue to be used during the duration of construction.



East view.



Northwest view.



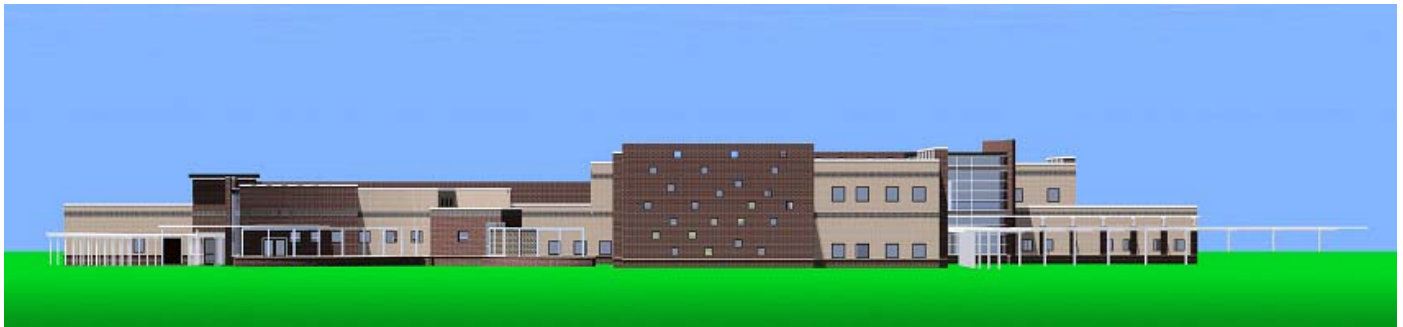
Monthly Executive Summary Report
Reflects Previous Month's Activity
Stiles Point Elementary School
Constituent District 3



First Floor Plan



Second Floor Plan



East elevation



North elevation