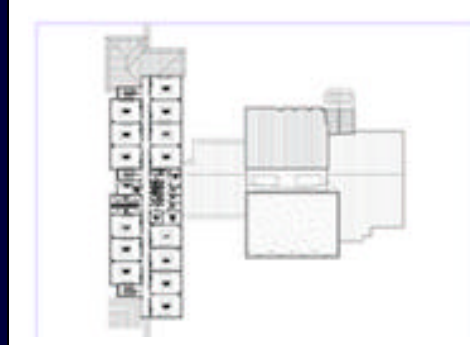




**Monthly Executive Summary Report**  
 Reflects Previous Month's Activity  
**Stiles Point Elementary School**  
 Constituent District 3



First Floor



Second Floor

***Project Team***

**Associate Superintendent:** Dr. Doug Gepford

**Principal:** Stephen Burger

**Project Manager:** Jay Poston

**Architectural Firm:** McMillan-Smith & Partners Architects

**General Contractor:** TBD

**Site Manager:** TBD

**Design Architect:** Emma Souder

***Project Scope:***

Construction of a new two-story 600-student K-5 facility on the existing site. The facility will include 29 instructional spaces with complementary support areas as indicated in the Educational Specifications. The new facility will be erected behind the existing school which will continue to be utilized during the approximate two year duration. Upon completion of the project the existing facility will remain for use as future swing space.

***Budget:***

**Original Budget:** \$22 Million

**Revised Budget:** \$19.1 Million

**Date:** 5-10-2006

**Date:** 4-9-2007



***Schedule:***

**Design:** July 2007

**Solicitation:** September 2007

**Construction:** August 2009

**Schedule Issues:** Design delay pending resolution of capacity issue



**Major Issues:** Site parking/traffic flow, building design revisions

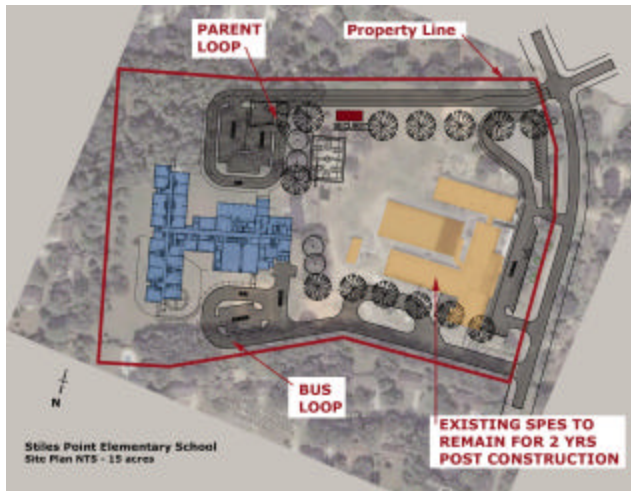
**Achievements:** Schematic design submission to OSF site soil investigation/subsurface analysis. Revisions to facility footprint/layout.

***Phasing/Mobile Classrooms:***

Construction on the existing site will be accomplished in one phase. Existing mobile classroom units will continue to be used during the duration of construction.



Monthly Executive Summary Report  
Reflects Previous Month's Activity  
**Stiles Point Elementary School**  
Constituent District 3



Site Plan