



Monthly Executive Summary Report  
Reflects Previous Month's Activity  
**Cario Middle School**  
Charleston County School District



***Project Team***

Associate Superintendent: Dr. Lynda Davis

Principal: Shari Bouts

Project Manager: Jack Burgess

Architectural Firm: HGBD Arch./Eng.

Contractor: Metro Contracting, Inc.

Site Manager: Larry Jordan

Design Architect: Michael Pierce, AIA      General

*Project Scope: Construction of 12 additional classrooms at the rear of three wings on the existing facility. Each wing will receive a reading, math, general classroom and science lab. Additional features will include a teacher work space off the science lab, additional storage closet, corridor windows and new exists leading to connecting sidewalks.*

***Budget:***

Original Budget: \$6 Million

Revised Budget: \$5 Million

Date: 5-10-2006

Date: 4-9-2007



***Schedule:***

Design: March 2007      Solicitation: June 2007      Construction: Complete August 2008

Schedule Issues: None at this time.



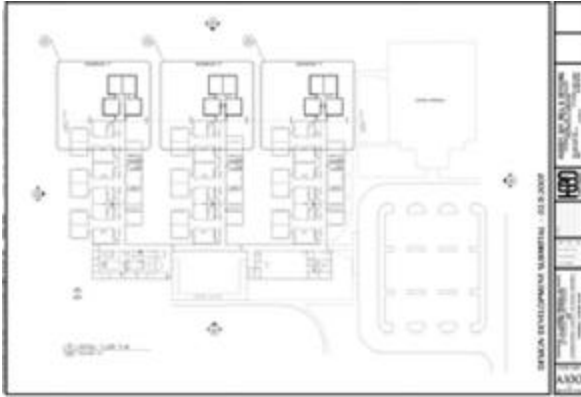
***Major Issues:*** None at this time.

***Achievements:*** The project is approximately 30 % complete. Pod's A, B and C all completed underground utilities installed and poured concrete pads. Pod "A" has block walls completed with electrical rough-ins in and exterior brick masonry has begun. Block walls at Pod "B" are approximately 95% complete, all door frames are set and electrical rough-ins completed. Pod "C" block walls will begin the week of November 26<sup>th</sup>. Roof joist are scheduled for delivery on November 29<sup>th</sup> with installation to follow the week of December 3<sup>rd</sup>. Dry in of the buildings is expected during the month of January. The project is currently on schedule.

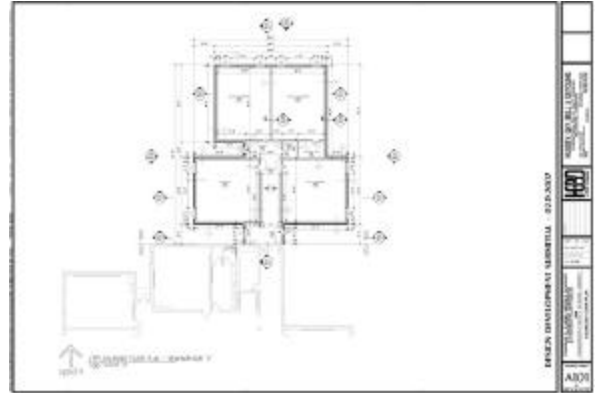
***Phasing/Mobile Classrooms:*** None required - Addition will not effect existing school operations.



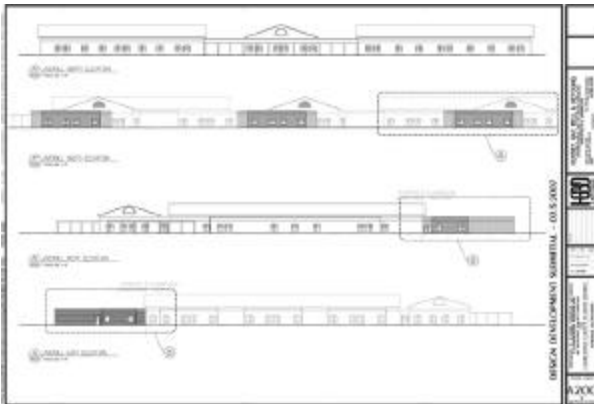
Monthly Executive Summary Report  
Reflects Previous Month's Activity  
**Cario Middle School**  
Charleston County School District



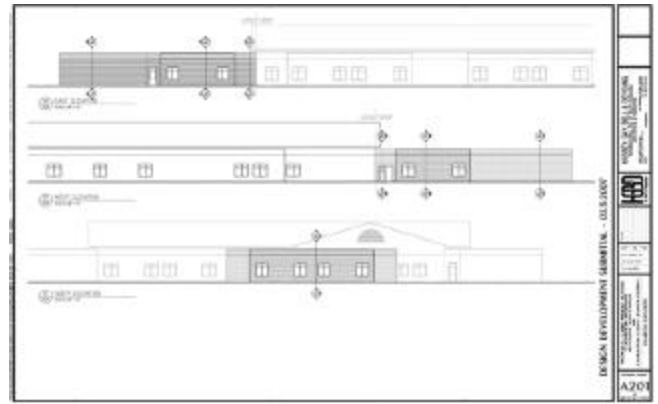
**Overall Floor Plan**



**Addition(s) Typical Floor Plan**



**Elevation**



**Elevation**